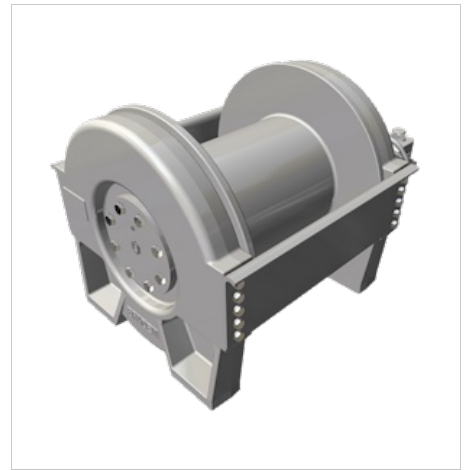


# BRADEN

## CH165A-25120-01

### Features and Benefits

- Auxiliary break available
- Groove drum to help prevent spooling issues (available on some units)
- Sealed, high-efficiency planetary reduction gearing for continuous-duty performance
- Spring-applied multi-disc brake
- Underwind configuration available for clockwise hoisting



Line Pull	Unit Weight
16500lbs	1050lbs
7484kg	476kg

### Performance

	Imperial	Metric
Ratio	25.000:1	
Motor Displacement	12.030 ci	197.2 cc
Pressure	2982 psi	206.0 bar
Winch Flow	170 gpm	643.5 lpm
Rope Diameter	0.7500 in	19.1 mm
Cable Capacity	434 in	132 mm

Layer	Line Pull (lbs)	Line Speed (fpm)	Line Pull (kg)	Line Speed (mpm)
1	16500	434	7484	133
2	14850	482	6736	147
3	13500	530	6123	162
4	12370	579	5611	177
5	11420	627	5180	192
6	10610	675	4813	206

The last legal layer per ANSI is 6  
D/d = 18:1

### Applications for MODEL CH165

- Crane
- Offshore

#### Resources:

- [Sales - LIT2077](#)
- [Sales - LIT2078](#)
- [Sales - LIT2264](#)
- [Service - LIT2319](#)
- [Material List - LIT2135](#)
- [Material List - LIT2326](#)