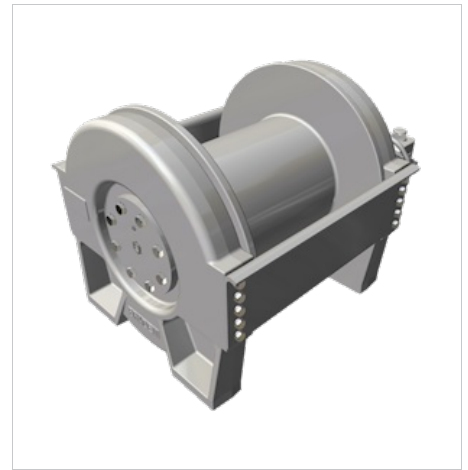


# BRADEN

## CH165A-25128/064-01

### Features and Benefits

- Auxiliary break available
- Groove drum to help prevent spooling issues (available on some units)
- Sealed, high-efficiency planetary reduction gearing for continuous-duty performance
- Spring-applied multi-disc brake
- Underwind configuration available for clockwise hoisting



Line Pull	Unit Weight
16500lbs	1120lbs
7484kg	508kg

### Performance

	Imperial	Metric
Ratio	25.000:1	
Motor Displacement	12.750 ci	209.0 cc
Pressure	2777 psi	192.0 bar
Winch Flow	85 gpm	321.8 lpm
Rope Diameter	0.7500 in	19.1 mm
Cable Capacity	181 in	55 mm

Layer	Line Pull (lbs)	Line Speed (fpm)	Line Pull (kg)	Line Speed (mpm)
1	16500	181	7484	56
2	14850	202	6736	62
3	13500	222	6123	68
4	12370	242	5611	74
5	11420	262	5180	80
6	10610	282	4813	86

The last legal layer per ANSI is 6  
D/d = 18:1

### Applications for MODEL CH165

- Crane
- Offshore

#### Resources:

- [Sales - LIT2077](#)
- [Sales - LIT2078](#)
- [Sales - LIT2264](#)
- [Service - LIT2319](#)
- [Material List - LIT2135](#)
- [Material List - LIT2326](#)