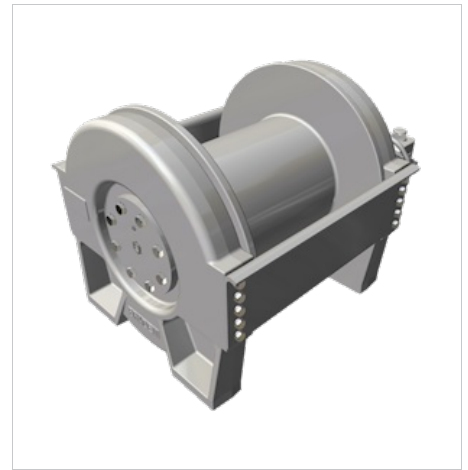


BRADEN

CH165A-25110-01-1

Features and Benefits

- Auxiliary break available
- Groove drum to help prevent spooling issues (available on some units)
- Sealed, high-efficiency planetary reduction gearing for continuous-duty performance
- Spring-applied multi-disc brake
- Underwind configuration available for clockwise hoisting



Line Pull	Unit Weight
15040lbs	1075lbs
6822kg	487kg

Performance

	Imperial	Metric
Ratio	25.000:1	
Motor Displacement	11.030 ci	180.8 cc
Pressure	2997 psi	207.0 bar
Winch Flow	155 gpm	586.7 lpm
Rope Diameter	0.7500 in	19.1 mm
Cable Capacity	429 in	130 mm

Layer	Line Pull (lbs)	Line Speed (fpm)	Line Pull (kg)	Line Speed (mpm)
1	15040	429	6822	131
2	13530	477	6137	146
3	12300	524	5579	160
4	11280	572	5117	175
5	10410	620	4722	189
6	9670	667	4386	204

The last legal layer per ANSI is 6
D/d = 18:1

Applications for MODEL CH165

- Crane
- Offshore

Resources:

- [Sales - LIT2077](#)
- [Sales - LIT2078](#)
- [Sales - LIT2264](#)
- [Service - LIT2319](#)
- [Material List - LIT2135](#)
- [Material List - LIT2326](#)