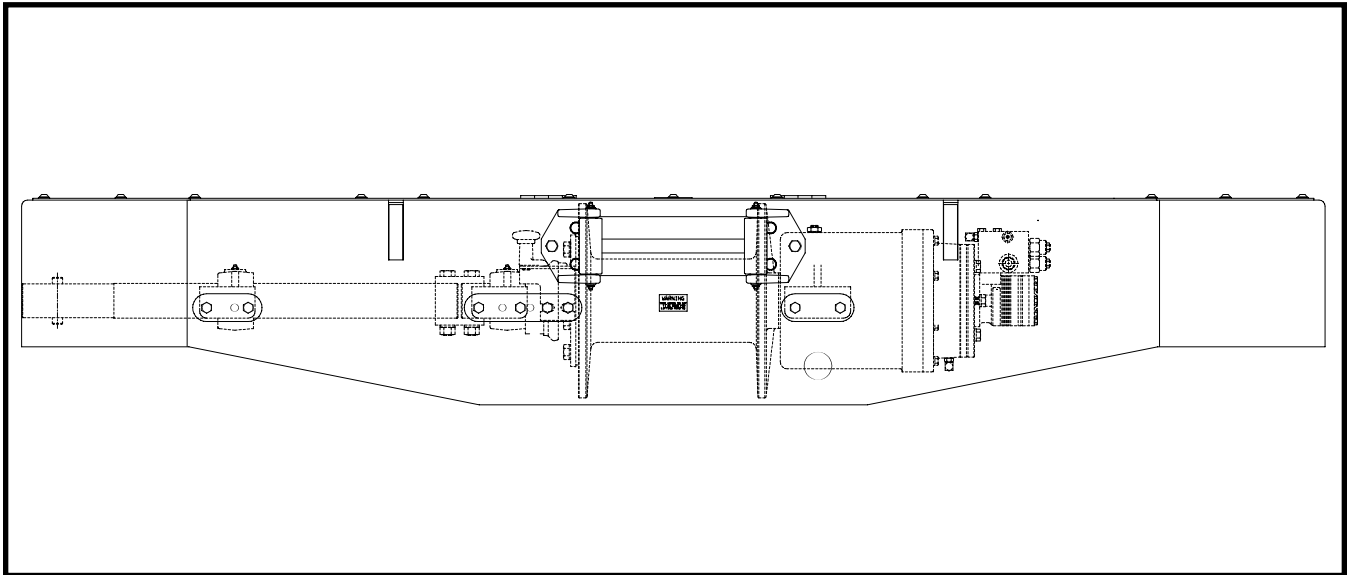


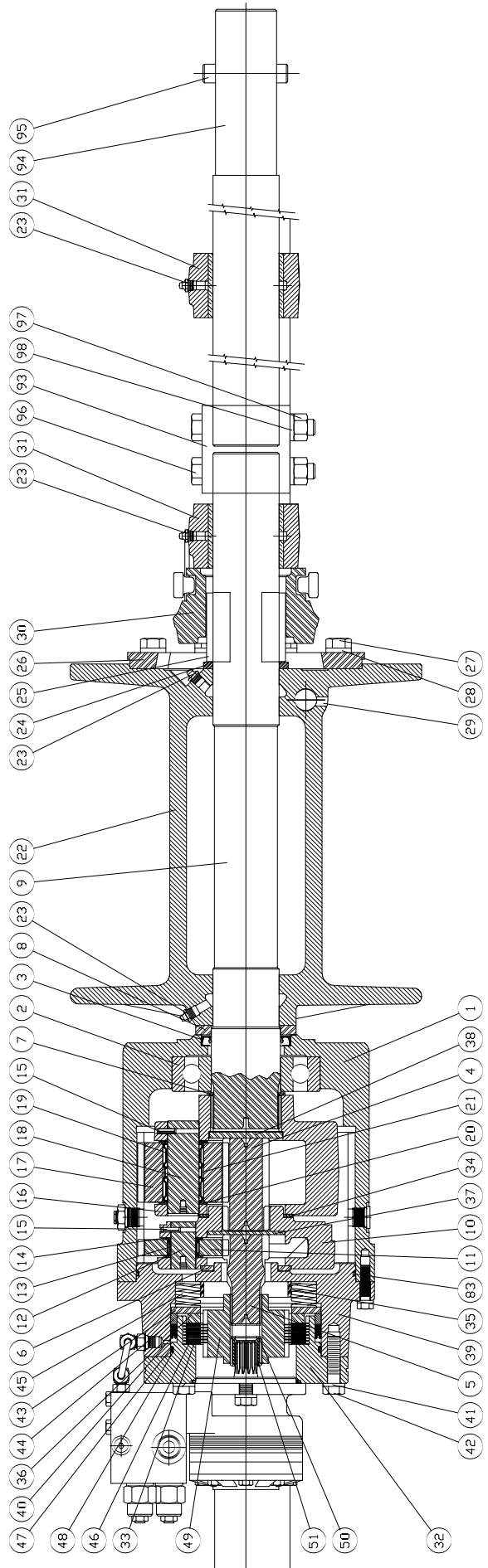
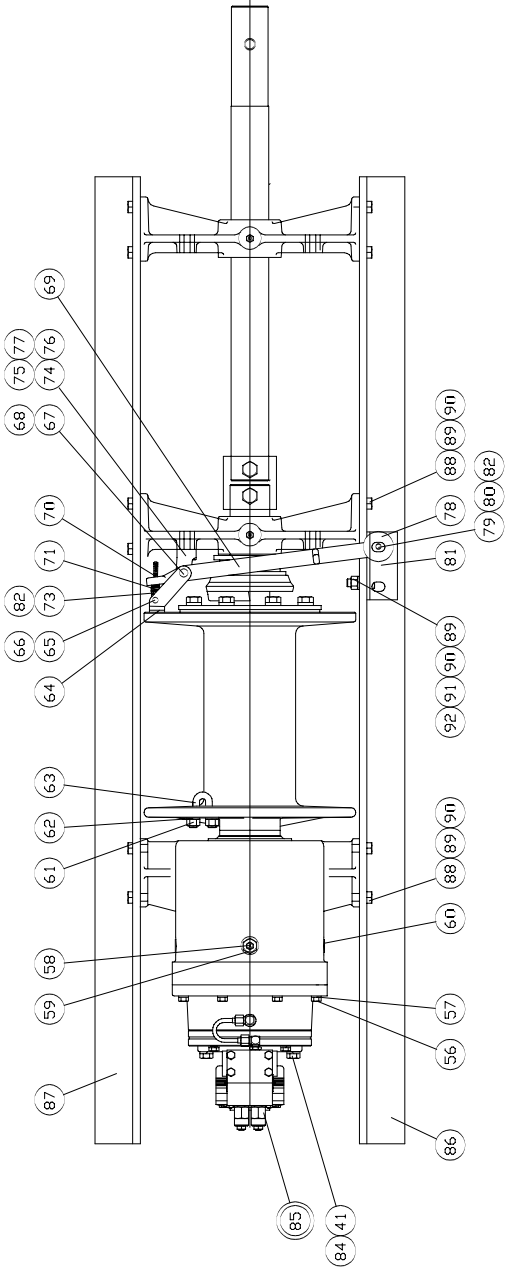
BRADEN[®]

HUP30B

MATERIAL LIST



HUP30B WINCH PARTS



HUP30B WINCH PARTS LIST

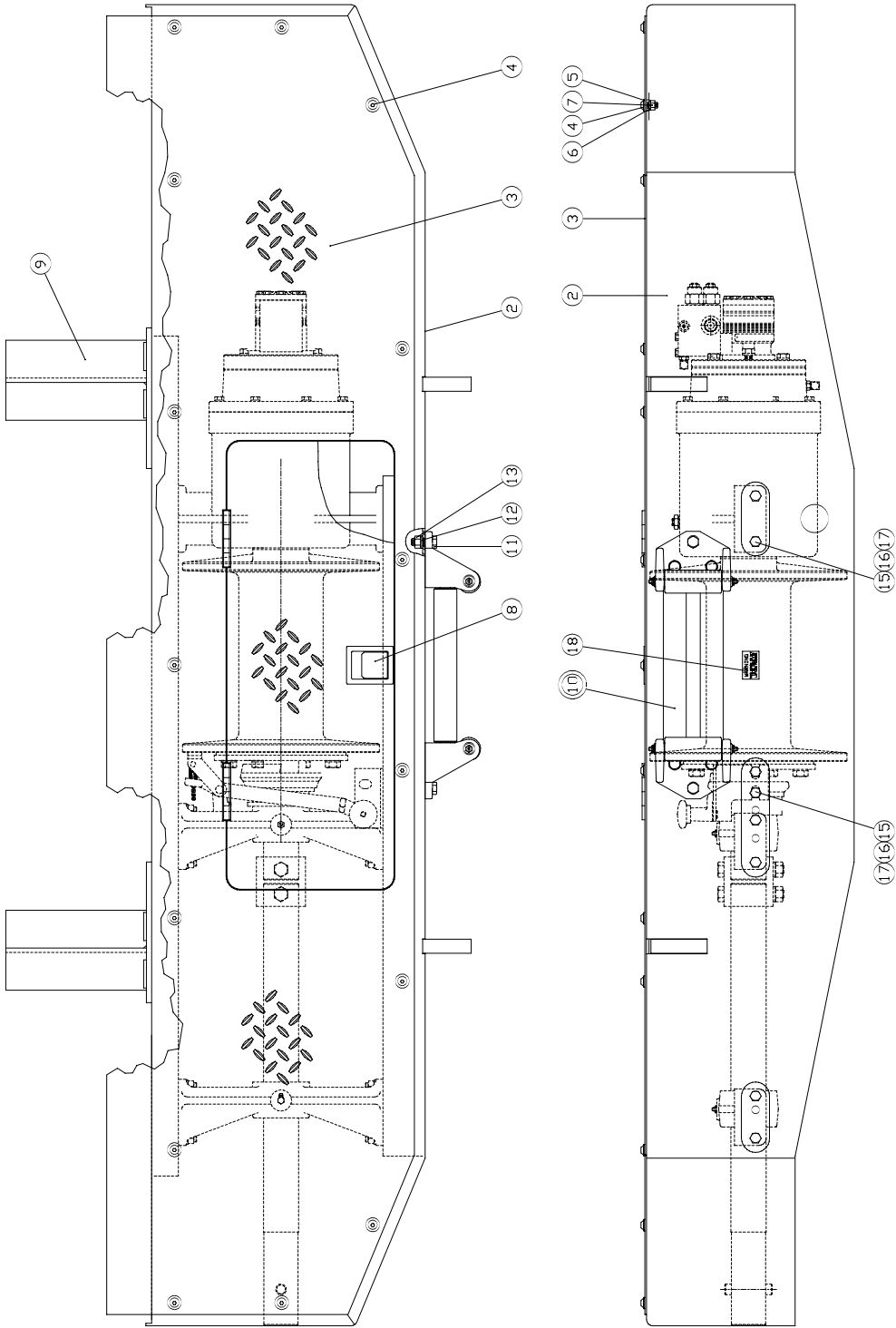
ITEM NO.	DESCRIPTION	PART NO.	QTY
48	BACK-UP RING	25643	1
49	BRAKE COUPLING	102197	1
50	RETAINING RING	24506	2
51	MOTOR COUPLING ADAPTER	29173	1
56	CAPSCREW (3/8 - 16 X 1-1/2 G8 Z)	104313	8
57	LOCKWASHER (3/8 Z)	27152	8
58	VENT VALVE	10074	1
59	REDUCER	26868	1
60	O-RING FLUSH PLUG	32411	3
61	NUT, HEX (1/2 - 13 Z)	101439	3
62	LOCKWASHER (1/2)	11026	11
63	CABLE CLAMP	11704	1
64	BRAKE SHOE ASSEMBLY	88010	1
65	CLEVIS PIN	18017	1
66	COTTER PIN	11078	1
67	PIVOT PIN	18021	1
68	COTTERPIN	18008	1
69	SHIFTER FORK W/O BUMPER	11389	1
	SHIFTER FORK WITH BUMPER	100729	1
70	BRAKE SHOE LINK	11587	1
71	BRAKE SPRING	18002	1
73	NUT, HEX JAM (1/4 - 28)	13468	2
74	SHIFTER FORK BRACKET	11346	1
75	CAPSCREW (1/4 - 20 X 2 G8 Z)	21462	2
76	NUT, HEX (1/4 - 20)	11761	2
77	LOCKWASHER (1/4)	11015	2
78	SHIFTER FORK HANDLE	18022	1
79	HANDLE STEM	11309	1
80	SHIFTER FORK SPRING	11310	1
81	SHIFTER FORK BRACKET	11390	1
82	WASHER (1/4 NARROW)	11072	1
83	O-RING	76208	1
84	CAPSCREW (1/2 - 13 X 1-1/4 G8 Z)	104174	2
85	HYDRAULIC MOTOR SUB-ASSEMBLY	SEE FOLLOWING PAGES	
	BASE ANGLE, FRONT (64 inches long)	102231	1
86	BASE ANGLE, FRONT (35 inches long)	105060	1
	BASE ANGLE, REAR (64 inches long)	102232	1
87	BASE ANGLE, REAR (35 inches long)	105061	1
88	CAPSCREW (1/2 - 13 X 1.75 G8 Z)	104323	12
89	NUT, HEX (1/2 - 13 Z)	101439	13
90	LOCKWASHER (1/2)	11026	13
91	WASHER (1/2 NARROW)	11073	2
92	CAPSCREW (1/2 - 20 X 1-1/2 G8 Z)	11053	1
93*	COUPLING, EXTENSION SHAFT	100402	1
94*	EXTENSION SHAFT	101603	1
95*	CAPSTAN PIN	11980	1
96*	CAPSCREW (5/8 - 18 X 4-1/2 G8 Z)	22512	2
97*	NUT-HEX (5/8 - 18)	22702	2
98*	LOCKWASHER (5/8 Z)	102423	2

* These parts apply only to winches with an extension shaft.

ITEM NO.	DESCRIPTION	PART NO.	QTY
1	HOUSING	101305	1
2	BALL BEARING	25718	1
3	SEAL	70168	1
4	OUTPUT SUN GEAR	100854	1
5	PRIMARY SUN GEAR	101343	1
6	THRUST WASHER	40128	1
7	RETAINING RING	70575	1
8	THRUST RING	101369	1
9	CABLE DRUM SHAFT	101307	1
10	PRIMARY PLANET CARRIER	100852	1
11	PRIMARY PLANET GEAR	26466	3
12	PRIMARY PLANET GEAR SHAFT	25614	3
13	ROLLER BEARING	24175	3
14	THRUST WASHER	25361	6
15	SPIROL PIN	24113	6
16	OUTPUT PLANET CARRIER	25602	1
17	OUTPUT PLANET GEAR	26467	3
18	OUTPUT PLANET GEAR SHAFT	25613	3
19	ROLLER BEARING	25292	6
20	THRUST WASHER	25443	3
21	BEARING SPACER	24306	6
22	CABLE DRUM	11199	1
23	GREASE FITTING	18047	3 or 4
24	RETAINING RING	13466	1
25	CLUTCH KEY	11065	2
26	CLUTCH PLATE	11209	1
27	CAPSCREW (5/8-11 X 1-3/4 G8 Z)	103249	8
28	LOCKWASHER (5/8)	102423	8
29	SETSCREW	12227	1
30	CLUTCH	11211	1
31	BEARING LEG (INCLUDES ITEM 31A)	82470	1 or 2
31A	BUSHING	11061	1 or 2
32	SINGLE-SPEED MOTOR SUPPORT	100458	1
33	STEEL DISC	100027	8
34	THRUST WASHER	40129	1
35	SPRING SPACER	100200	1
36	SPACER	25637	1
37	THRUST PLATE	25729	1
38	THRUST PLATE	25638	1
39	BRAKE CYLINDER	101306	1
40	PISTON SEAL	25642	1
41	LOCKWASHER (1/2)	11026	6
42	CAPSCREW (1/2 - 13 X 2 G8 Z)	29855	4
43	PRESSURE PLATE	25635	1
44	PISTON BACKUP RING	25636	1
45	SPRING	25644	12
46	FRICITION DISC	21036	7
47	O-RING	24981	1

NOTE: Single- and two-speed motors use different adapters. For item 32 in table above, the two-speed motor support is Part Number 102618.

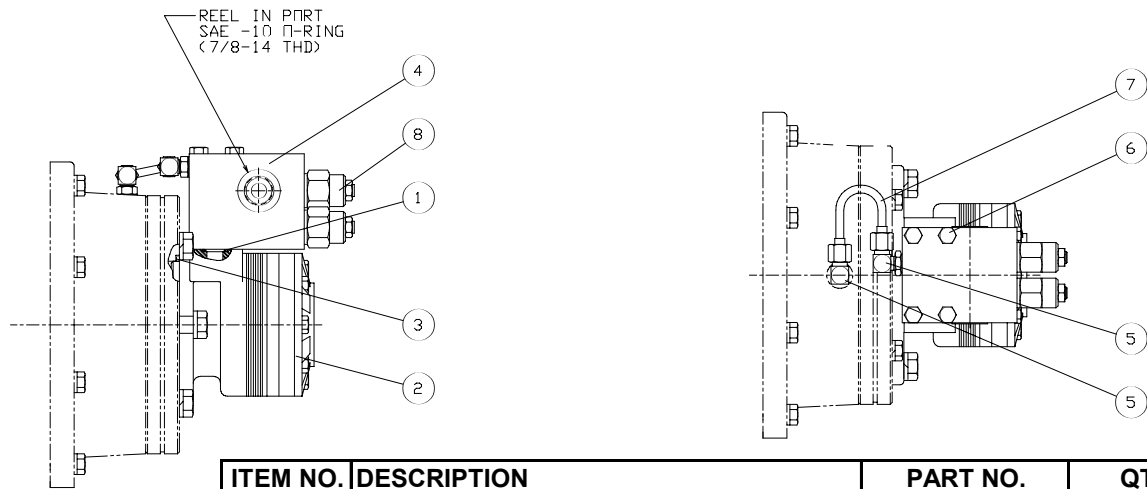
HUP30B BUMPER PARTS



ITEM NO.	DESCRIPTION	PART NO.	QTY
2	BUMPER WELDMENT	101861	1
3	TOP PLATE ASSEMBLY	100666	1
4	CAPSCREW (3/8 - 16 X 1 G8)	23630	15
5	WASHER (3/8)	27889	15
6	LOCKWASHER (3/8)	27152	15
7	HEX NUT (3/8)	11780	15
8	PADDLE LATCH	29270	1
9	MOUNTING BRACKET	29225	2

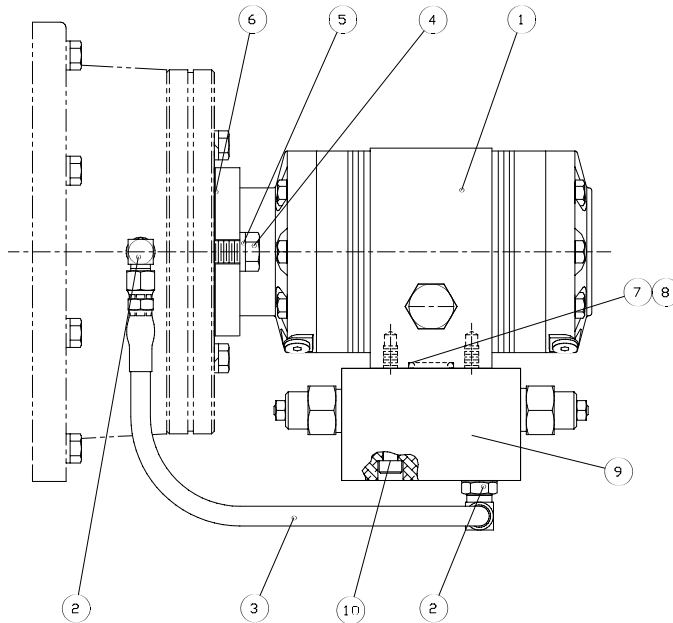
ITEM NO.	DESCRIPTION	PART NO.	QTY
10	CABLE ROLLER ASSEMBLY	82693	1
11	CAPSCREW (1/2 - 13 X 1-1/2 G8 Z)	104322	6
12	LOCKWASHER (1/2)	11026	6
13	HEX NUT (1/2)	101439	6
15	CAPSCREW (1/2 - 13 X 1-3/4 G8 Z)	104323	10
16	HEX NUT (1/2)	101439	10
17	LOCKWASHER (1/2)	11026	10
18	WARNING PLATE	23330	1

HUP30B SINGLE-SPEED MOTOR PARTS



ITEM NO.	DESCRIPTION	PART NO.	QTY
1	O-RING	12273	2
2	HYDRAULIC MOTOR (8.8 cu in.)	27485	1
3	O-RING	21063	1
4	BRAKE VALVE BLOCK	40045	1
5	ELBOW FITTING	25302	2
6	CAPSCREW (5/16-18 X 3.5 G8 Z)	27622	4
7	TUBE ASSEMBLY	40053	1
8	COUNTERBALANCE VALVE CARTRIDGE	27258	2
8A	C. B. VALVE SEAL KIT	29872	2

HUP30B TWO-SPEED MOTOR PARTS



NOTE: Single- and two-speed motors use different motor adapters.

ITEM NO.	DESCRIPTION	PART NO.	QTY
1	HYDRAULIC MOTOR (7.2/3.6 cu in.)	103629	1
2	ELBOW FITTING	25302	2
3	HOSE ASSEMBLY	25749	1
4	CAPSCREW (1/2 - 13 x 1-1/4 G8 Z)	104174	2
5	LOCKWASHER (1/2)	11026	2
6	GASKET	22813	1
7	O-RING	72094	1
8	O-RING	22453	2
9	BRAKE VALVE ASSEMBLY	29599	1
9A	COUNTERBALANCE VALVE CARTRIDGE	27258	2
9B	C. B. VALVE SEAL KIT	29872	2
10	CAPSCREW (5/16 - 18 x 2.5 G8 Soc Hd Z)	22522	4

RECOMMENDED PLANETARY GEAR OIL

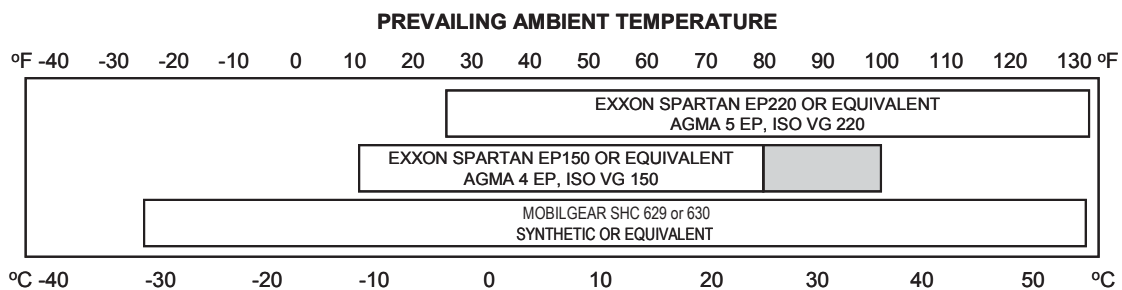
Field experience, supported by engineering endurance tests, indicates the use of the proper gear oil and a program of regular preventive maintenance will help provide extended gear train life and reliable winch brake performance. For this reason, BRADEN has published the following specifications to assist in determining which lubricant is best suited to your application.

⚠ WARNING ⚠

Failure to use the proper type and viscosity of planetary gear oil may contribute to intermittent brake clutch slippage which could result in property damage, severe personal injury or death. Some gear lubricants contain large amounts of EP (extreme pressure) and anti-friction additives which may contribute to brake clutch slippage or damage to brake friction discs or seals. Oil viscosity with regard to ambient temperature is also critical to reliable brake clutch operation. Our tests indicate that excessively heavy or thick gear oil may contribute to intermittent brake clutch slippage. Make certain that the gear oil viscosity used in your winch is correct for your prevailing ambient temperature.

For simplicity, BRADEN has listed available products in each temperature range that have been tested and found to meet our specifications. This is not to say that other lubricant brands would not perform equally as well.

If the following lubricant brands are not available in your area, make certain your lubricant vendor supplies you with oil that is equivalent to those products listed below.



i NOTE: SHADED TEMPERATURE RANGE IN THE CHART ABOVE NOT RECOMMENDED FOR SEVERE APPLICATIONS SUCH AS: OFFSHORE CRANES, SUSTAINED FAST DUTY CYCLES OR FREQUENT LIFTING.

Texaco Meropa 150, previously used as factory fill, may no longer be widely available due to current market conditions. As of mid-year 2002, planetary hoists are factory filled with Exxon Spartan EP150, or equivalent. The chart below relates the Texaco products to 4 currently available oils. Consult your oil supplier for other equivalent oils if required.

Texaco	Exxon	Mobil	Shell	Chevron
Meropa 150	Spartan EP 150	Mobilgear 629	Omala 150	Gear Compounds EP 150
Meropa 220	Spartan EP 220	Mobilgear 630	Omala 220	Gear Compounds EP 220

9/2002

Unless otherwise specified, it is recommended that the gear oil be changed after the first one hundred (100) hours or thirty (30) days of machine operation, then every one thousand (1,000) hours or twelve (12) months, whichever occurs first. The gear oil should also be changed whenever the ambient temperature changes significantly and an oil from a different temperature range would be more appropriate.

A warm-up procedure is recommended at each start-up and is essential at ambient temperatures below +40°F (4°C).

The prime mover should be run at its lowest recommended RPM with the hydraulic winch control valve in neutral allowing sufficient time to warm up the system. The winch should then be operated at low speeds, forward and reverse, several times to prime all lines with warm hydraulic oil and to circulate gear lubricant through the planetary gear sets.

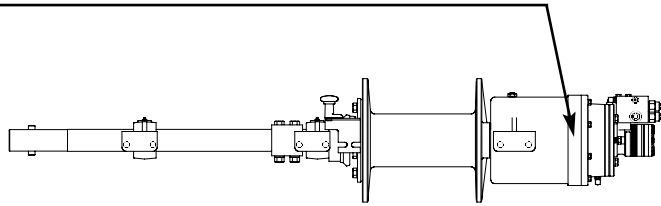
⚠ WARNING ⚠

Failure to properly warm up the winch, particularly under low ambient temperature conditions, may result in temporary brake slippage due to high back pressures attempting to release the brake, which could result in property damage, severe personal injury or death.

If you have any questions regarding this bulletin or your BRADEN planetary winch, please contact the BRADEN Product Support Department at 1-918-251-8511, Monday through Friday from 8:00 a.m. to 4:30 p.m. (CST).

Model Number

Serial Number



The BRADEN HUP30B winch has the model and serial numbers stamped into the gear housing. **Always** reference both of these numbers when ordering replacement parts. Our goal is to ship the correct parts, the first time.

FOR BEST RESULTS, ALWAYS USE GENUINE BRADEN REPLACEMENT PARTS

TO ORDER PARTS:

1. List model and serial numbers of the winch.
2. Refer to drawings and select the component(s) needed and list the item number(s).
3. Find item number(s) on material list; show part number, description and quantity required on your order.
4. Refer to parts price list and show price for each part or assembly.

